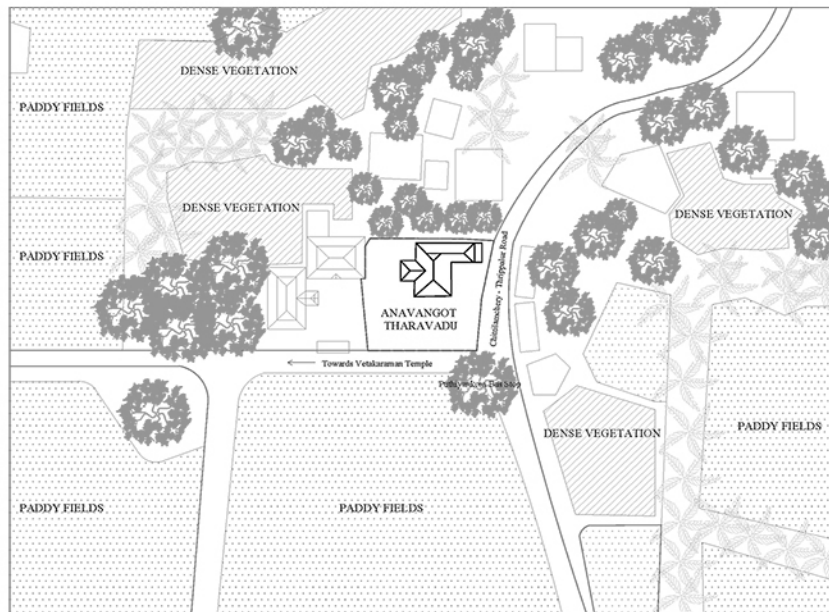


ANAVANGOT THARAVADU

ANAVANGOT THARAVADU : DRAWINGS AND DETAILS

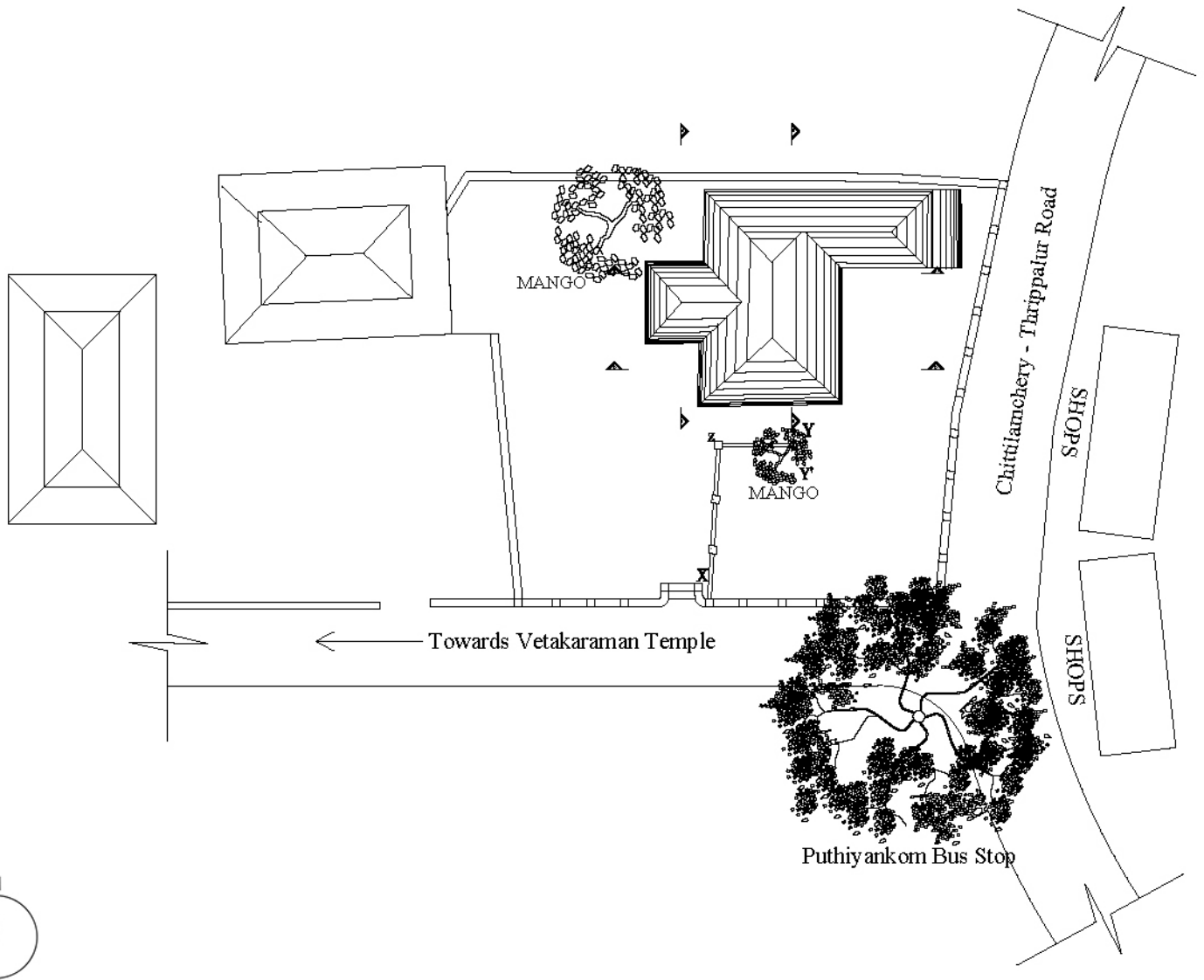
Anavangot Tharavadu is a century old ancestral home of the Anavangot family located in Puthiyankam, Palakkad district, Kerala. These drawings were produced by students and professionals of architecture as a result of the 5 day Hands On Heritage special edition documentation conducted by Masons Ink. The following drawings include plans, sections, elevations and interesting details of the building. Apart from the detailed documentation, a condition assessment survey was also carried out.

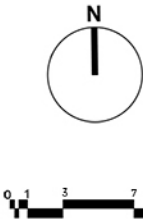
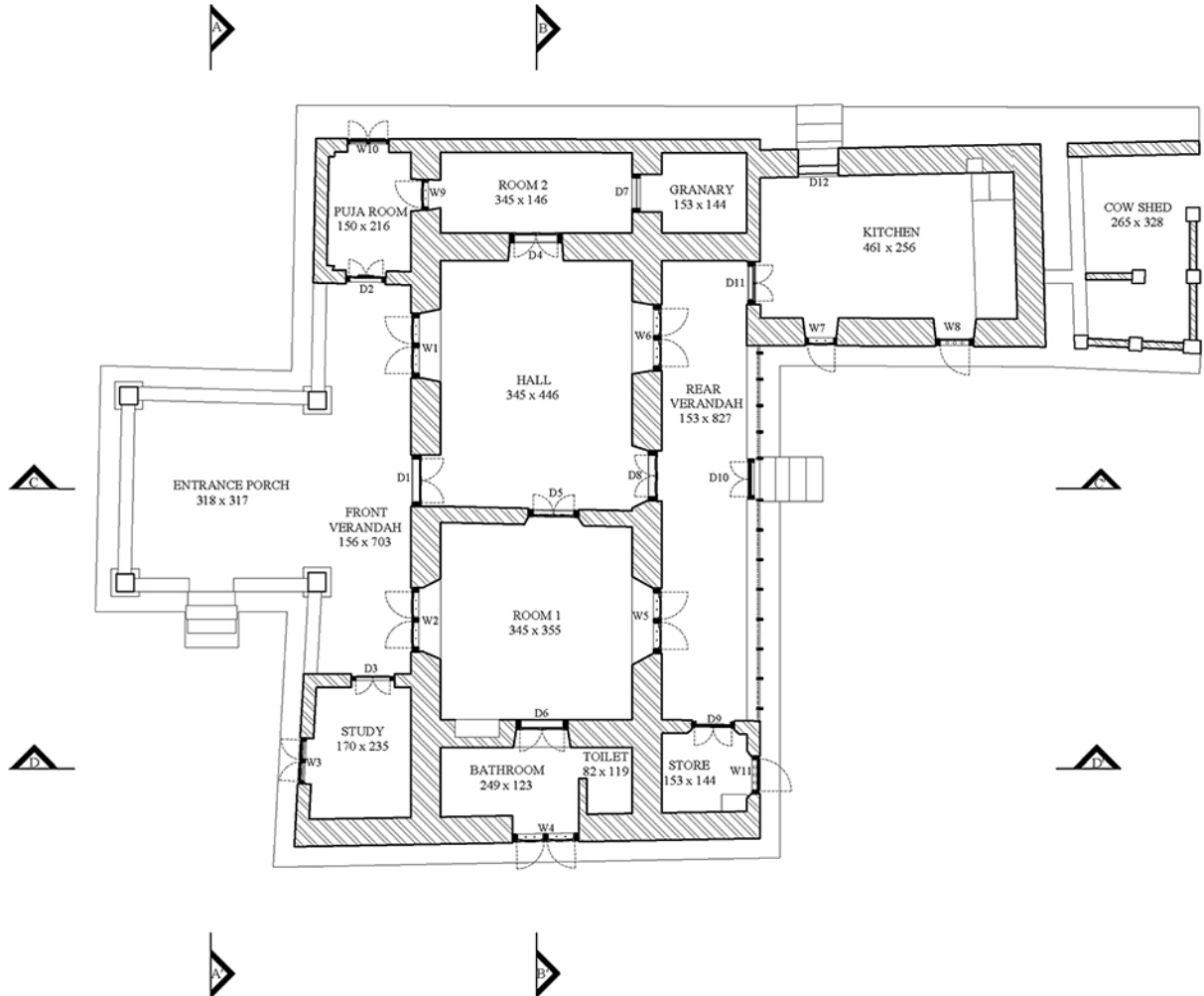
KEY PLAN



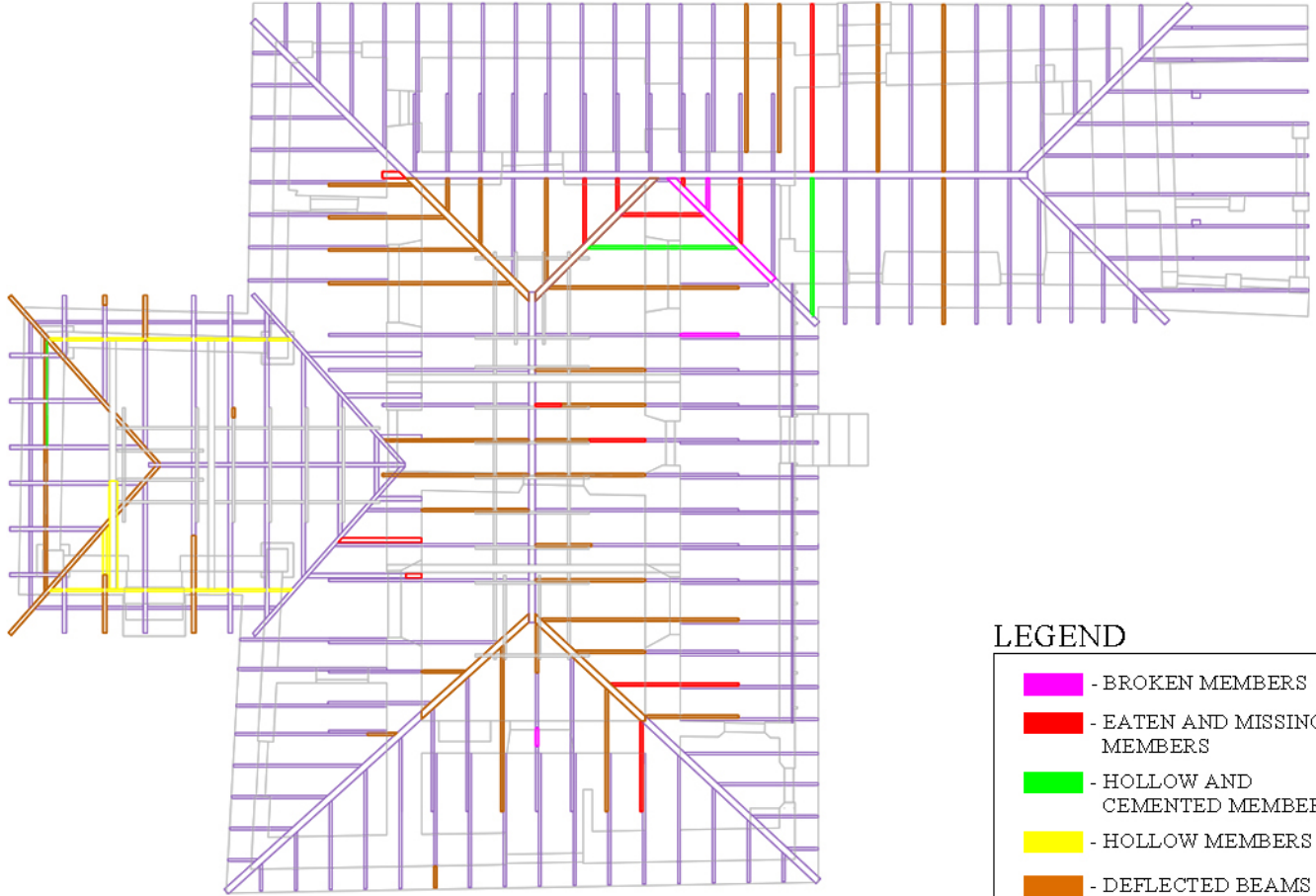


The house documented (extreme right) was part of a cluster of ancestral homes of the Anavangot family, sharing the same compound as seen in the picture above.





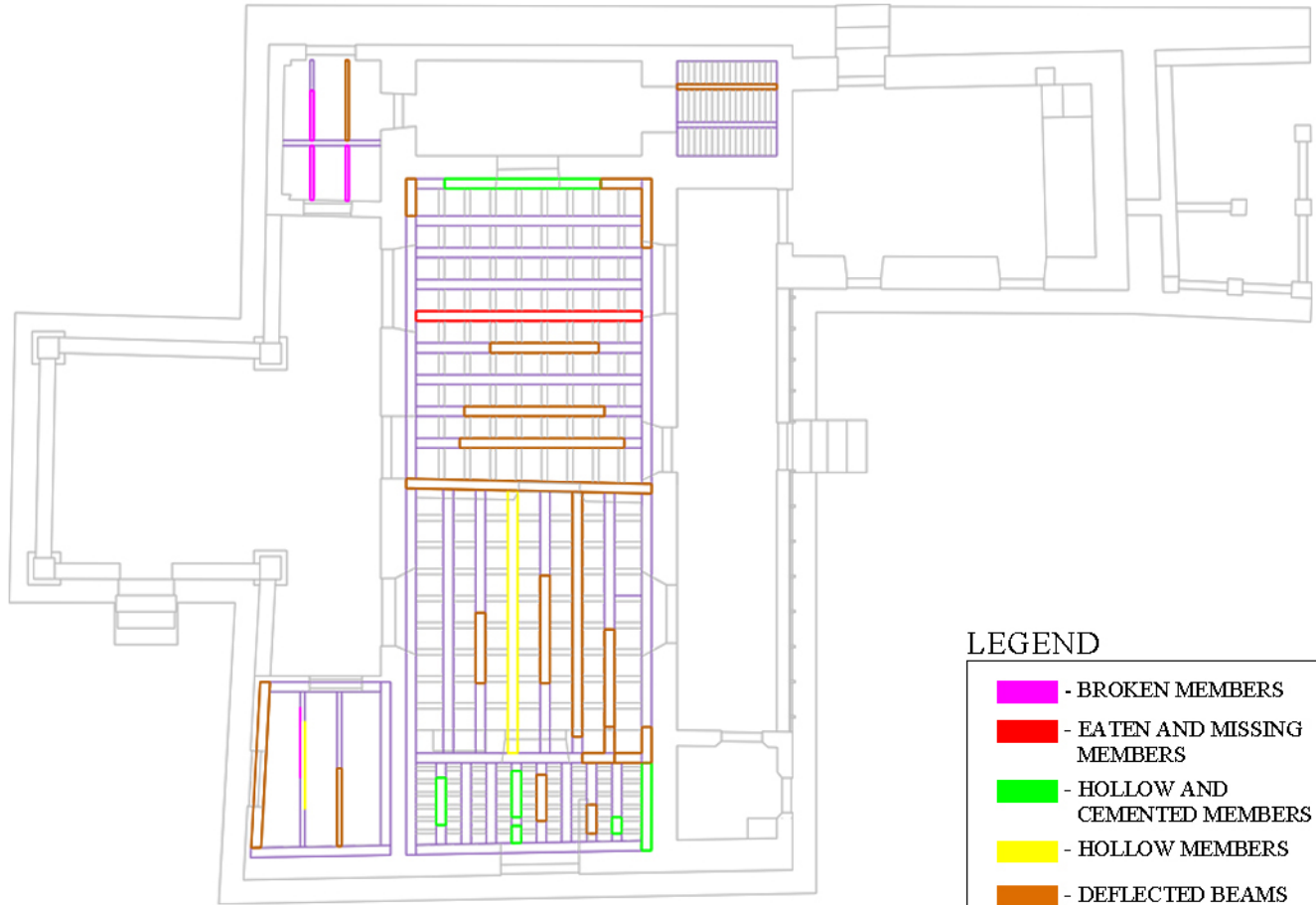
REFLECTED CEILING PLAN



LEGEND

-  - BROKEN MEMBERS
-  - EATEN AND MISSING MEMBERS
-  - HOLLOW AND CEMENTED MEMBERS
-  - HOLLOW MEMBERS
-  - DEFLECTED BEAMS





LEGEND

- █ - BROKEN MEMBERS
- █ - EATEN AND MISSING MEMBERS
- █ - HOLLOW AND CEMENTED MEMBERS
- █ - HOLLOW MEMBERS
- █ - DEFLECTED BEAMS



SECTION A-A'



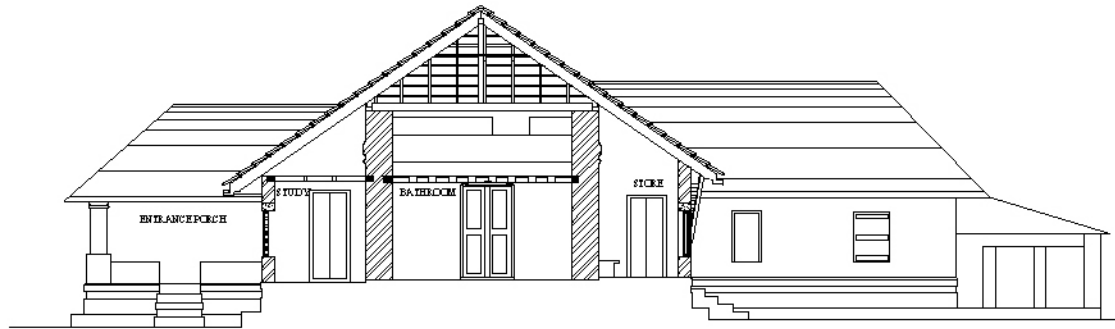
SECTION B-B'





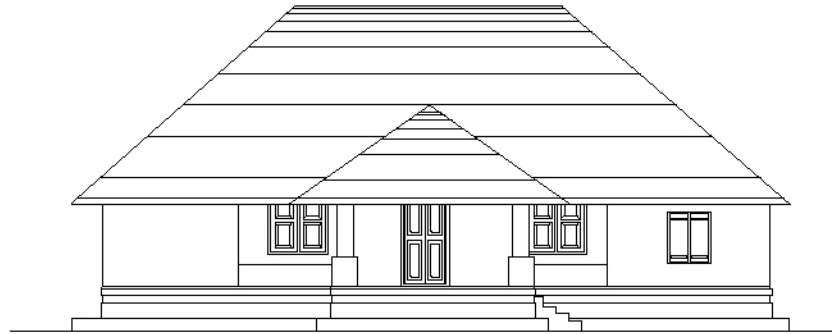
SECTION C-C'

TOP OF MAIN HIPPED ROOF	+4.71m
TOP OF KITCHEN HIPPED ROOF	+3.26m
TOP OF ENTRANCE PORCH HIPPED ROOF	+2.81m
TOP OF FLAT ROOF	+2.21m
BOTTOM OF MAIN HIPPED ROOF	+1.01m
	+0.00m
TOP OF PLINTH	-1.12m
GROUND LEVEL	-1.36m



SECTION DD'

TOP OF MAIN HIPPED ROOF	+4.71m
TOP OF KITCHEN HIPPED ROOF	+3.26m
TOP OF ENTRANCE PORCH HIPPED ROOF	+2.81m
TOP OF FLAT ROOF	+2.21m
	+0.00m
TOP OF PLINTH	-1.12m
GROUND LEVEL	-1.36m

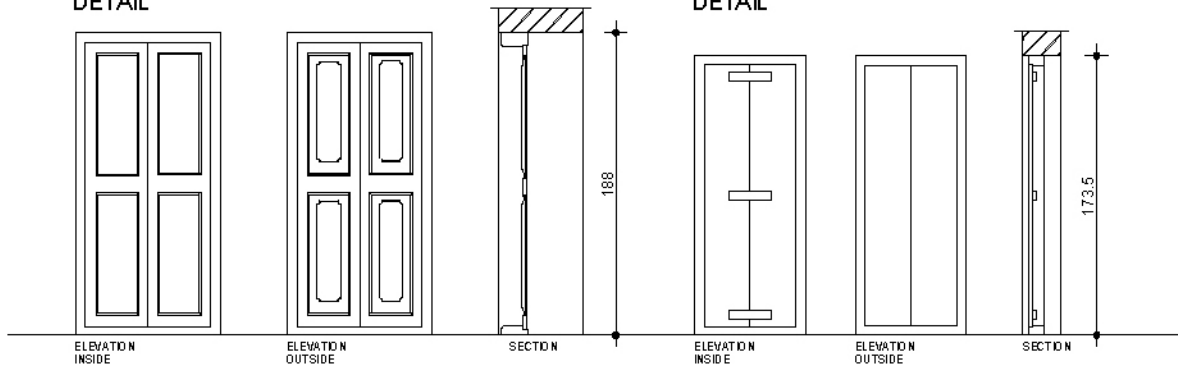


WEST ELEVATION

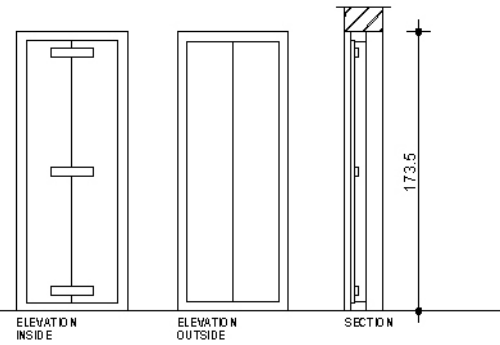


EAST ELEVATION

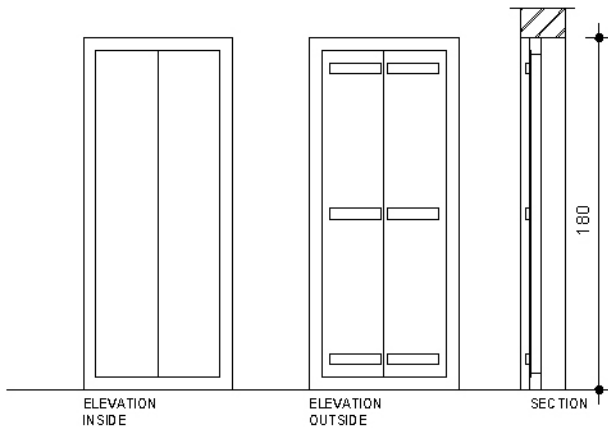
D1,D4,D5,D6,D8
DETAIL



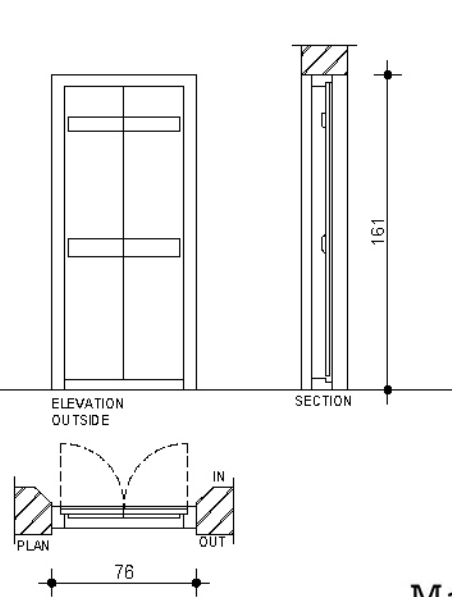
D2
DETAIL



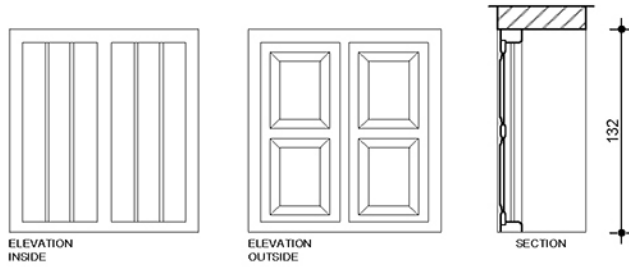
D3
DETAIL



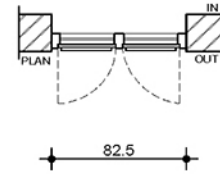
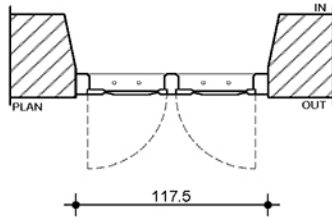
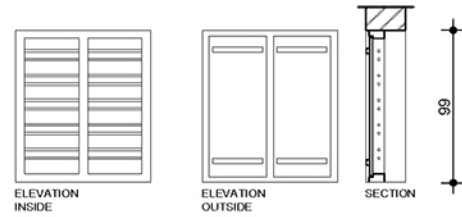
D9
DETAIL



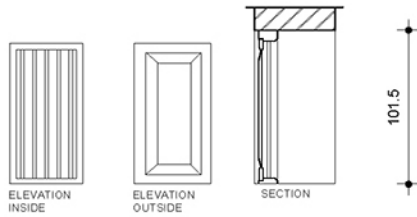
W1,W2,W4,W5,W6
DETAIL



W3
DETAIL



W7
DETAIL



W10
DETAIL

