

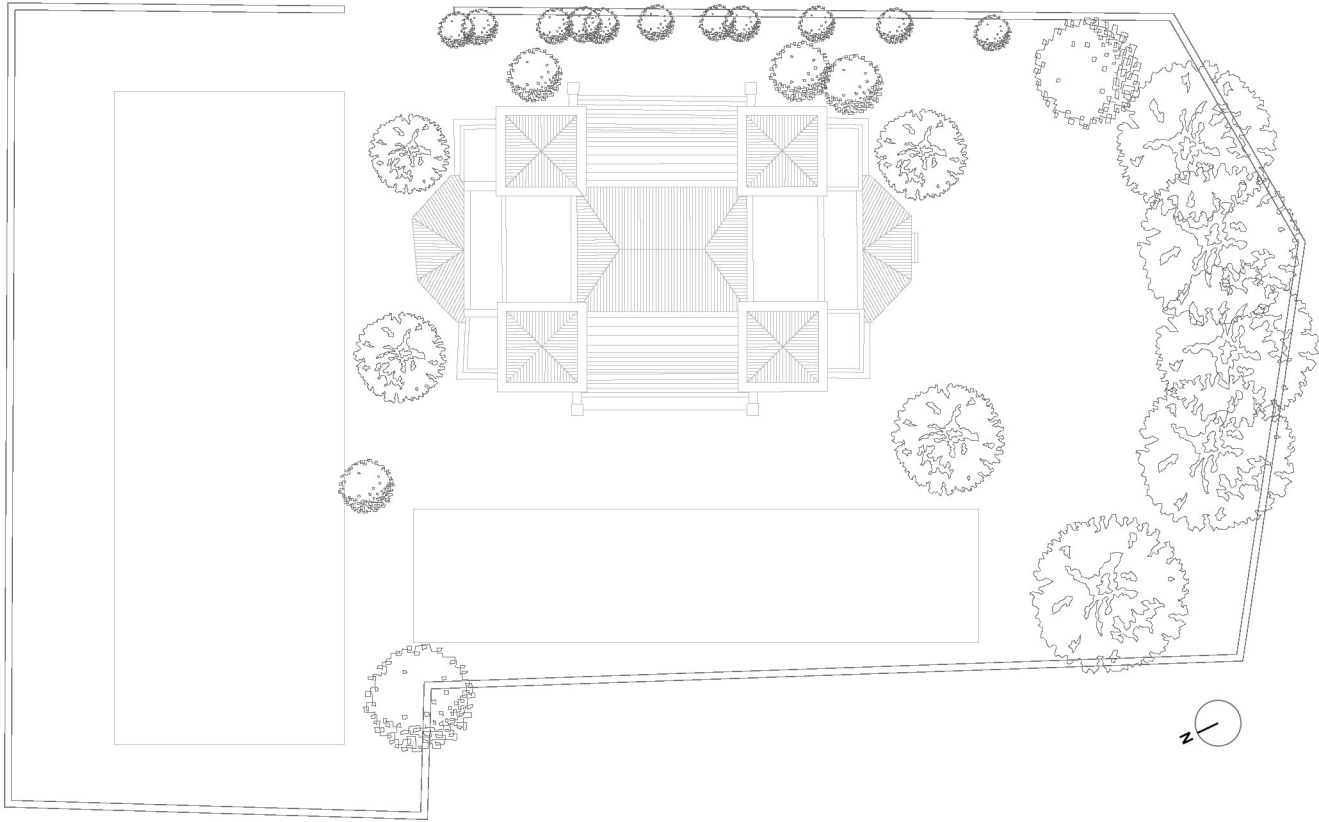
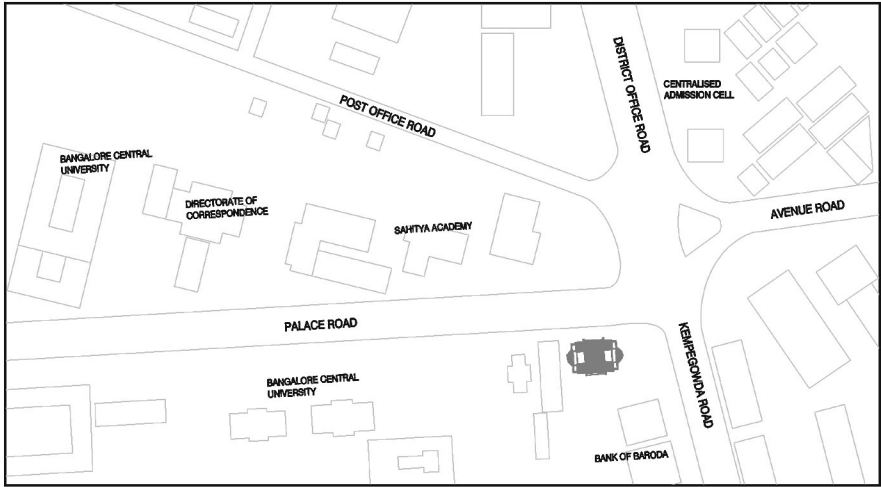


INDIAN COUNCIL OF HISTORIC RESEARCH

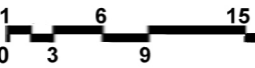
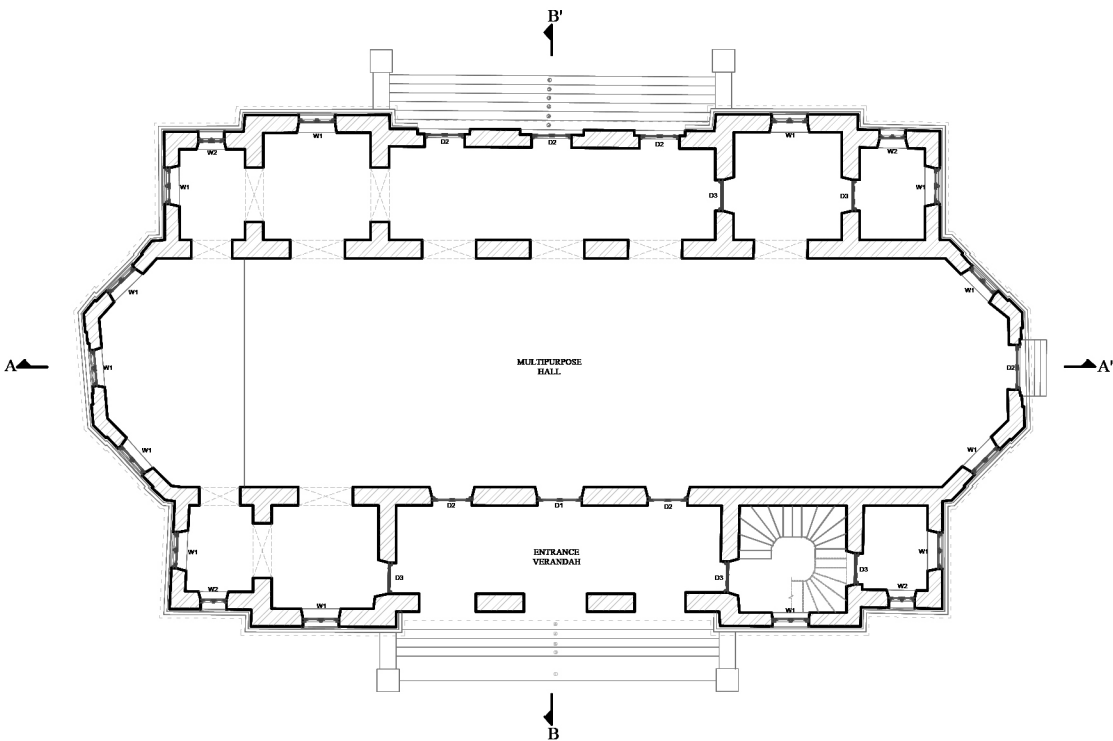
INDIAN COUNCIL OF HISTORIC RESEARCH: DRAWINGS AND DETAILS

ICHR is a 90 year old building, initially the University Union of Central College located at the intersection of Palace Road and Kempegowda Road. These drawings were produced by students of architecture as a result of the 7 day Hands On Heritage workshop conducted by Masons Ink and Esthetique Architects. The following drawings include plans, sections, elevations and interesting details of the building.

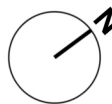
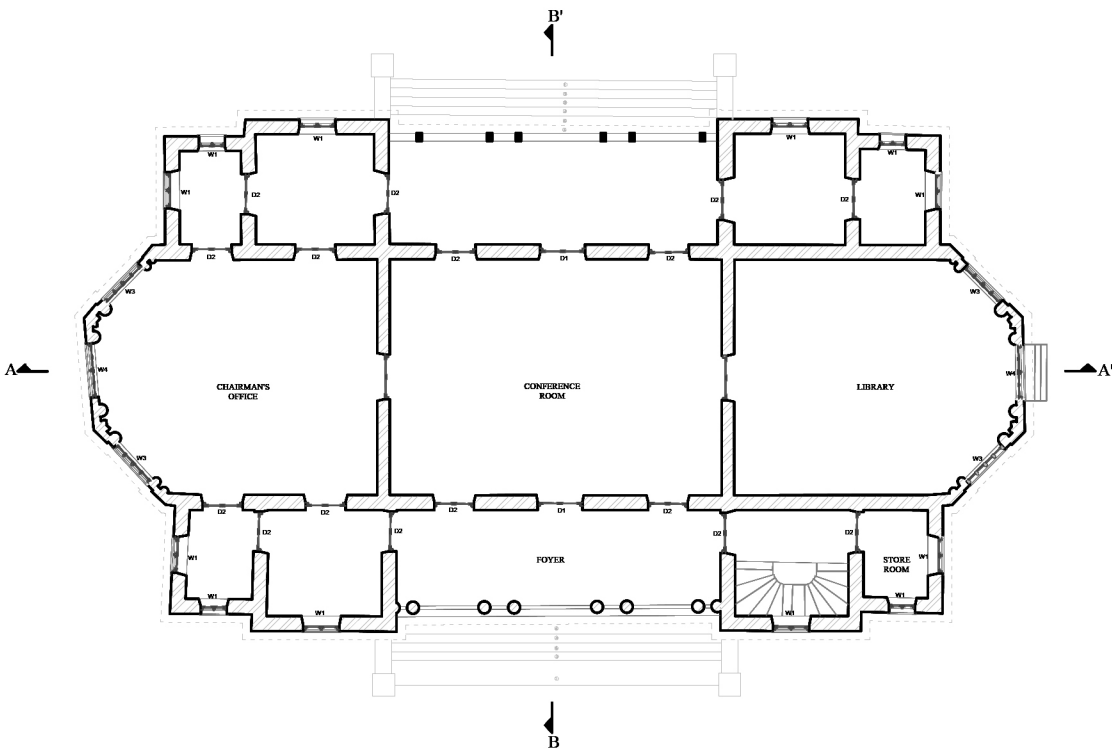
KEY PLAN



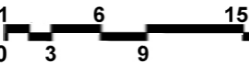
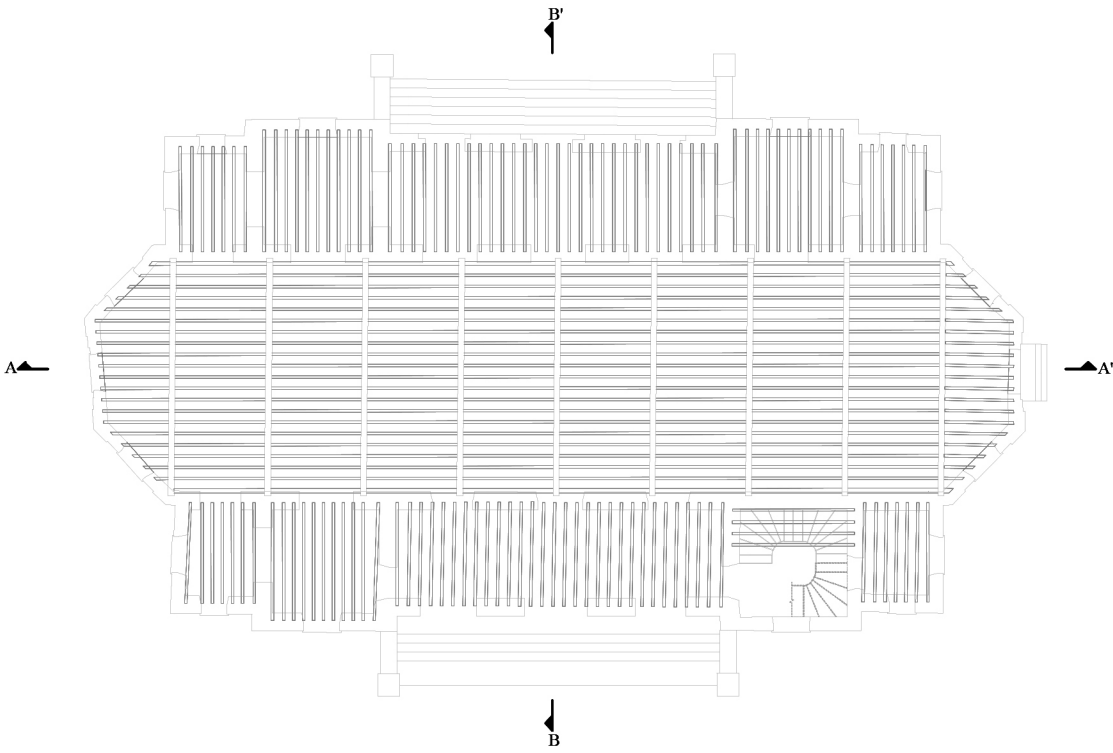
GROUND FLOOR PLAN



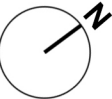
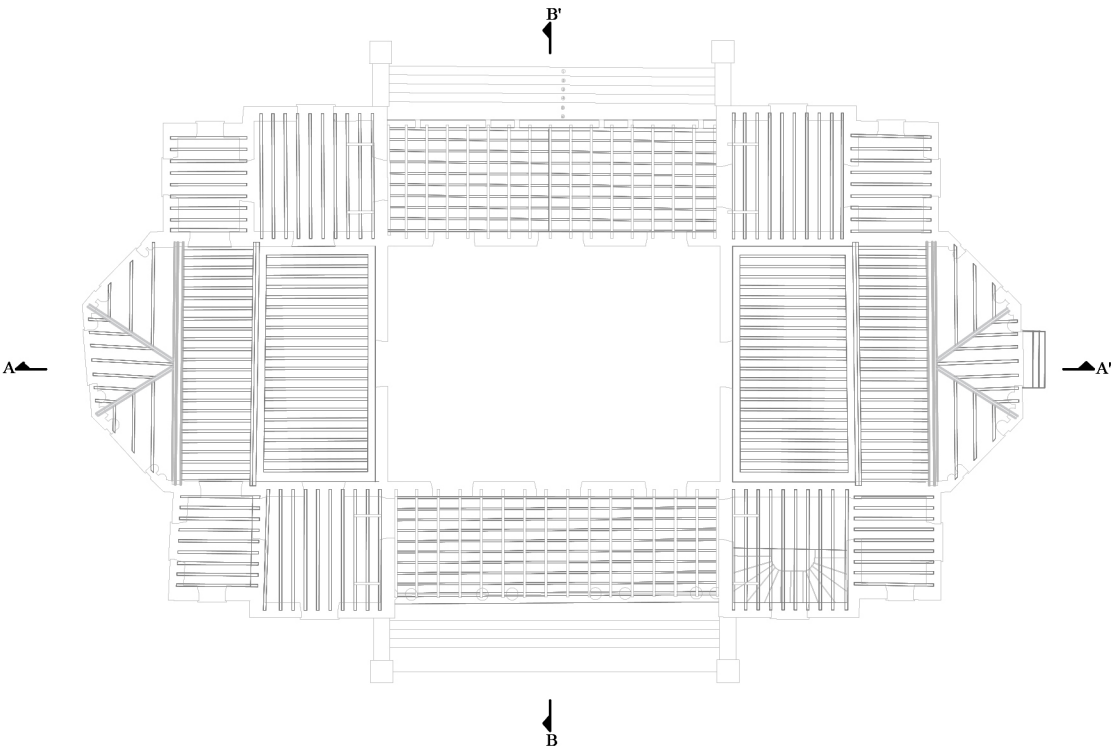
FIRST FLOOR PLAN

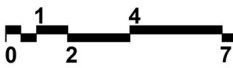
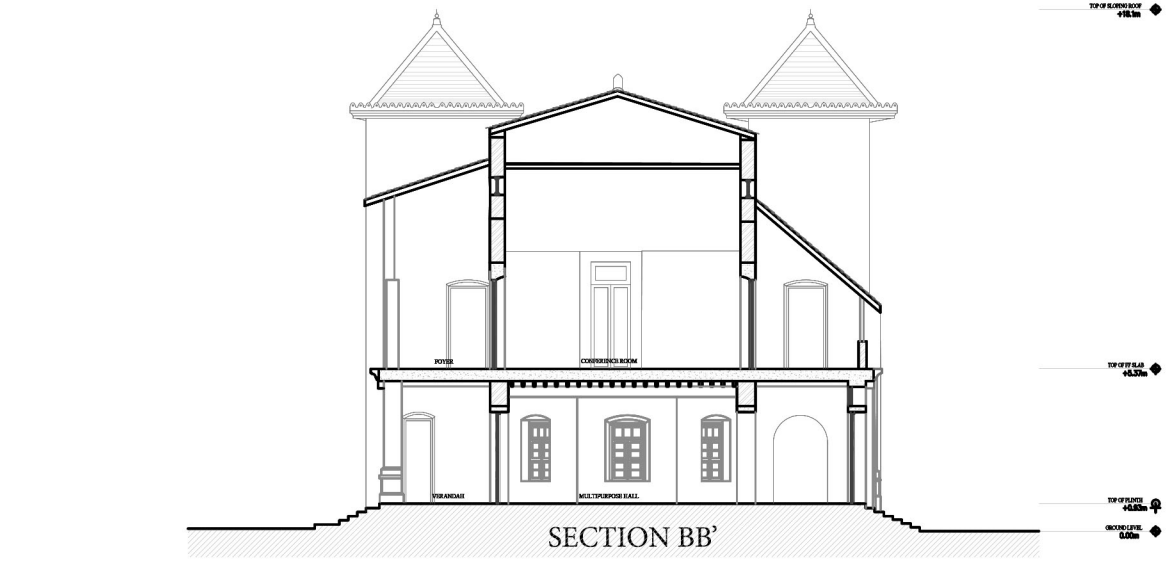
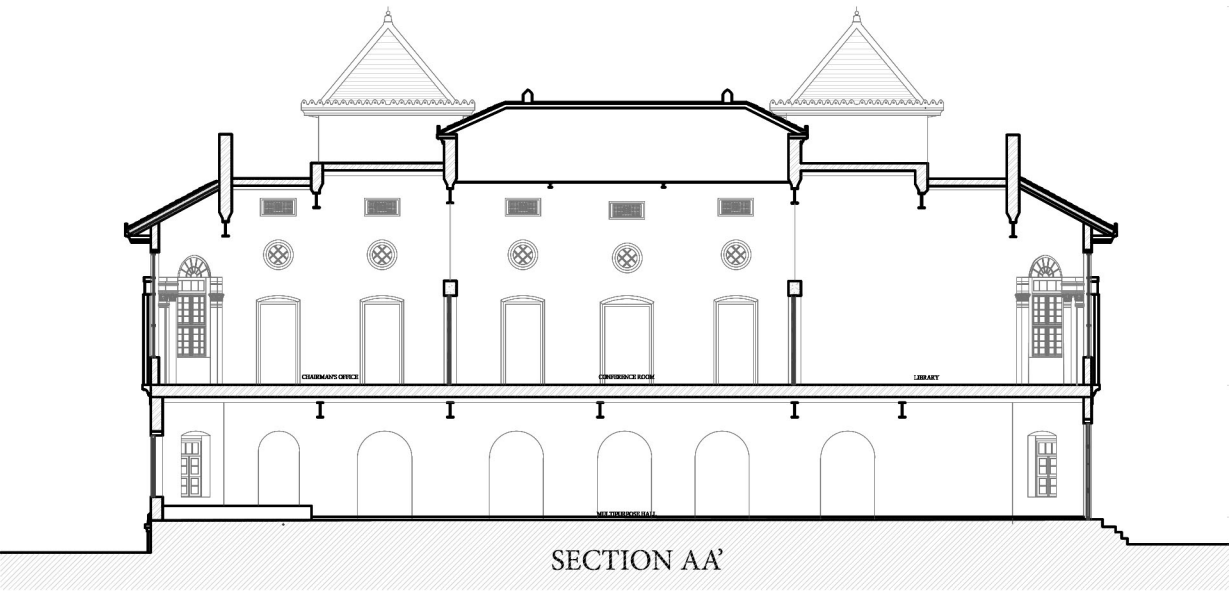


GF-REFLECTED CEILING PLAN



FF-REFLECTED CEILING PLAN



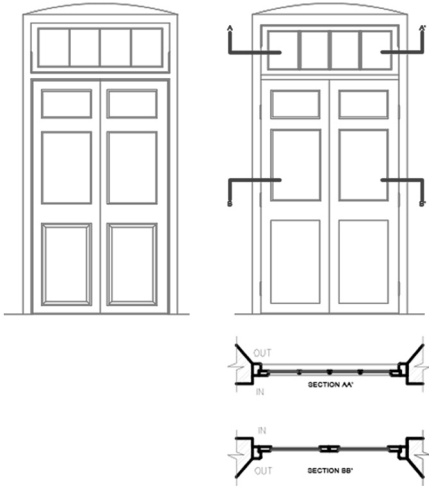


FRONT ELEVATION

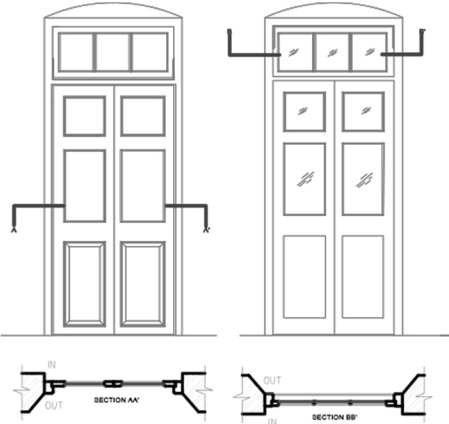


SIDE ELEVATION

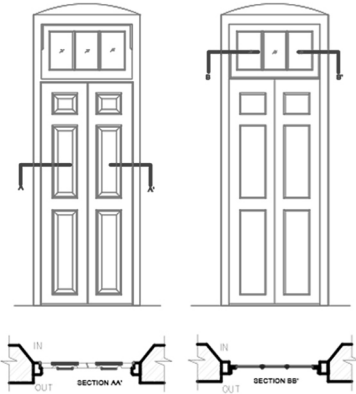
D1 DETAIL



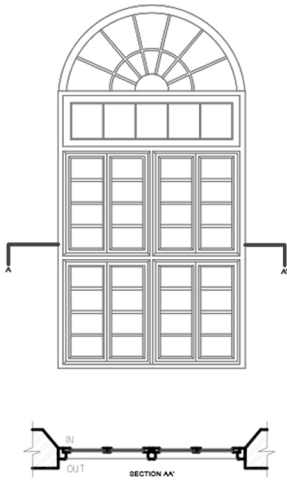
D2 DETAIL



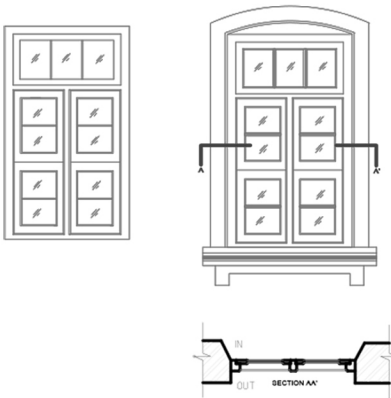
D3 DETAIL



W3 DETAIL



W1 DETAIL



W2 DETAIL

