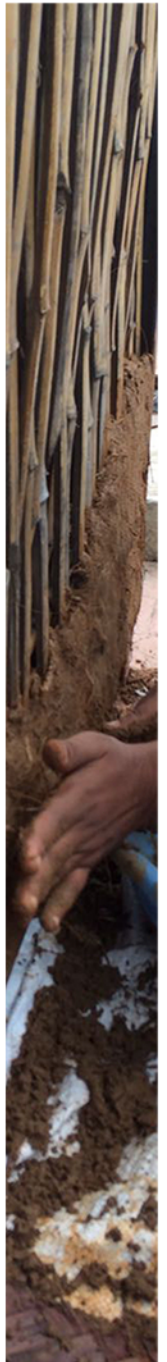
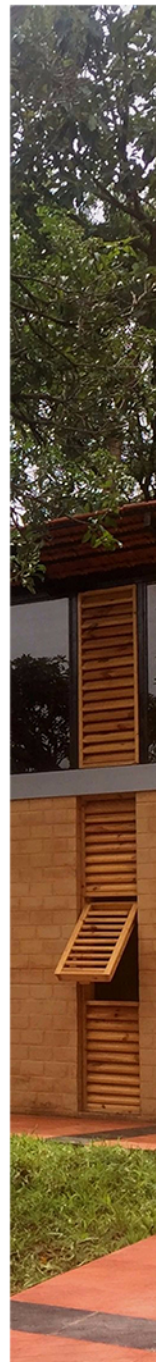
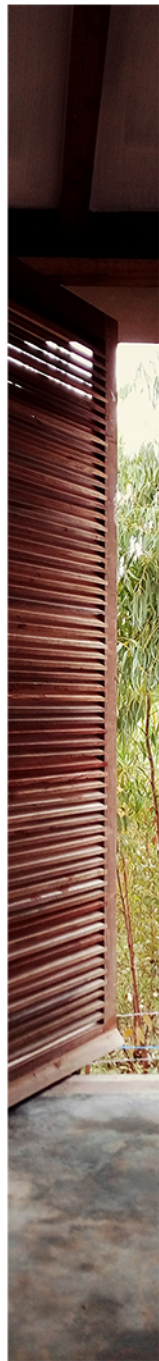




P A P E R S

2017

YEAR IN REVIEW





An organic farmhouse for an organic farm was the client brief and from a base material palette of mud, rough sadarhalli stone and repurposed wood this structure was born.

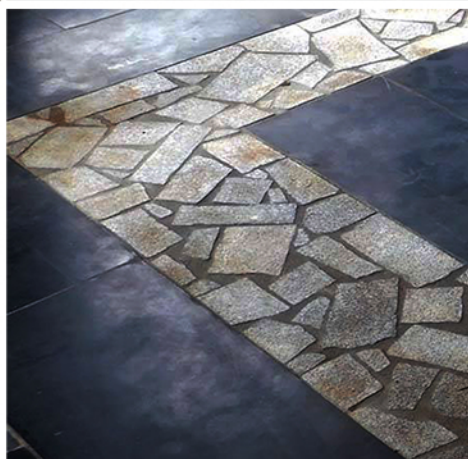
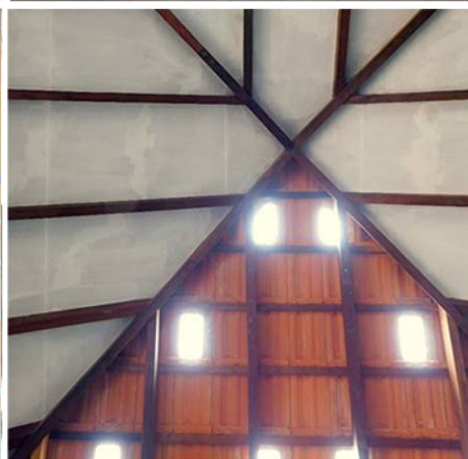
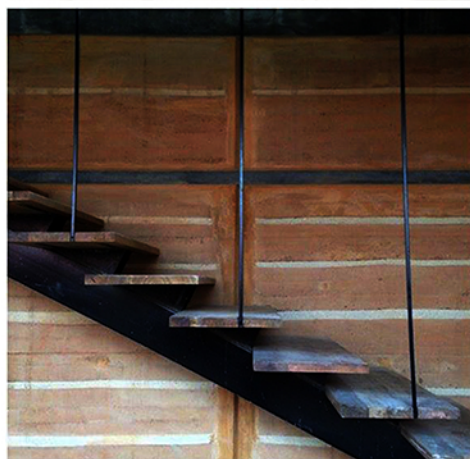
A contemporary design inspired from the vernacular forming soulful calming spaces away from the hustle and bustle of the city. This project looks at sustainability from the micro to the macro level with rainwater harvesting, waste water management, biogas and solar energy.

From top left to right:

The tulsi katte in the main courtyard; Louvered windows of the gym; Door to the puja room

From bottom left to right:

Central spine staircase; Roof detail at Puja, Flooring detail at Puja room



The Interior Entrance Verandah:
The entry to the house starts at this rustic verandah facing an interior courtyard with the tulsi katte. The walls are of rammed earth which uses the soil from site. As two colours were available, they have been incorporated into the wall design. The floors are a mix of polished cuddapah and rough granite.



THE COURTYARD HOUSE

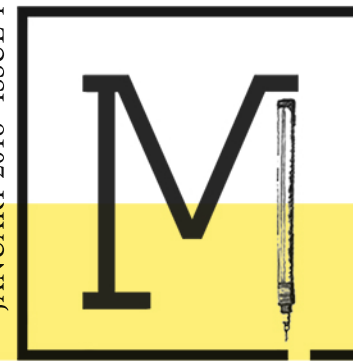
A Management consultant's workspace, an Artist's studio and an Architectural practice – these three functions with shared facilities of reception area and seminar halls will be housed in this 2500sqft unit. These multi functional requirements are connected through courtyards wherein the spaces flow easily from the outside to inside ensuring natural lighting and ventilation.

Located at Cochin, Kerala, the project was designed to be a flexible plan that could easily roll back to a three bedroom unit in the future.

A mix of rammed earth walls and earth blocks, the project lends wonderful earthy tones to the landscape.



Clockwise from far left:
Front view showing seminar hall entrance and brick facade of the courtyard;
Verandah to the artist's studio; External rammed earth facade of the reception;
Interior view of the management consultant's office; Vaulted earth roof of the seminar hall.



The project was built for and commissioned by The Sneha Charitable Trust which imparts training and mentoring for People Living with HIV (PLHIV). Located at Carmelaram, Bangalore, it is centered around a candle making workshop with ancillary spaces comprising of a display unit, a store and a seminar hall envisioned as an inclusive space to showcase the various activities run by the trust.

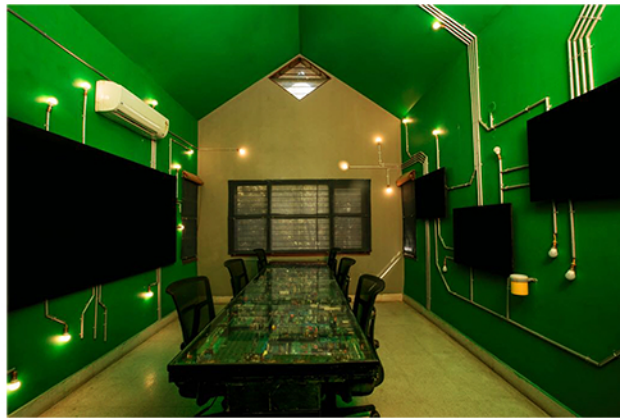
The site chosen within the 10 acre property dotted with several trees all of which was retained and the spaces are nestled around them.

Built on a tight budget, the design follows an overarching aesthetic of simple clean lines. This allows for the individuality of the materials to stand out and at the same time complement each other perfectly.



Left side top to bottom:
Construction of CSEB walls in progress; Floor to ceiling louvered pine wood windows; Front facade.
Right side:
Various elements of the external facade.





Left side top to bottom:
Product Design room upcycled from mother boards and computer parts; Marketing space upcycled from wooden shipping pallets; Outdoor cafe upcycled from plastic crates and bamboo ladders.



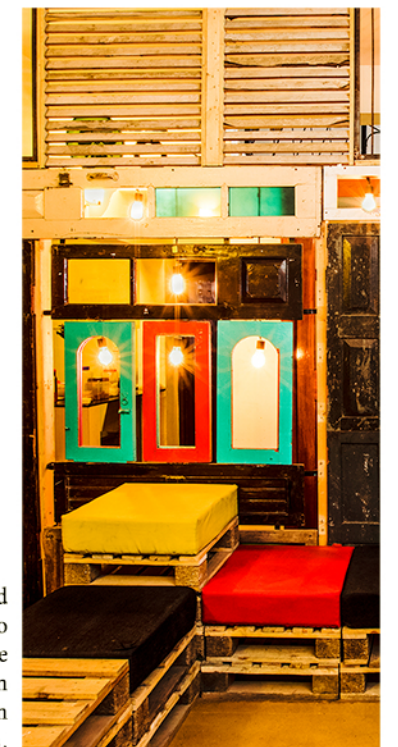
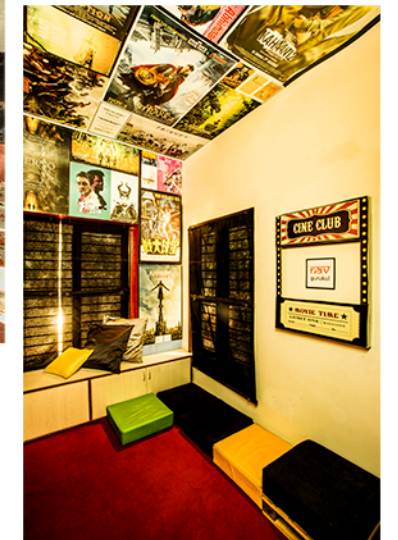
The Conference Room was given an industrial look through the use of materials like bicycle rims and cement boards for the table, rusted metal panels and mirrors for the wall and ceiling



Offering a paradigm shift from the ordinary office regime, The Nudge Foundation flaunts a bargain of colours with all that is raw and junk. Within a limited budget, the client brief demanded a completely up-cycled space that was not only fully functional and unique, but took care of the specific needs of each work area.

With an eclectic mix of lounge spaces and work areas, this office aims to harbour a culture that fosters creativity. The biggest challenge was converting a 5000 sft. house with living, dining, bedroom units to an office with various workspaces.

The design integrates custom-made furniture, built to fit the theme of each room and includes tables made out of old CPUs and mother boards, partition walls made out of old doors and windows, wallpaper made out of old newspapers and movie posters and lounging units carved into old cars to name a few.



Top to bottom, clockwise: Entrance sitout upcycled from automobile parts; Boot of a car repurposed to make the seating; Ideation room where old movie posters were re-used as wallpaper; Lounge seating in the Entrance Lobby, made prominent with a partition wall made out of old doors and windows.

jan

EARTH WORKSHOP
BANGALORE

A one day on-site block making workshop with the students of Mangalam School of Architecture, Kerala

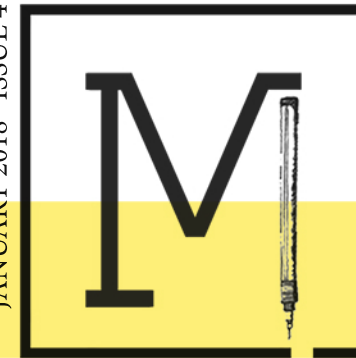


apr

HERITAGE HUNT
BANGALORE

Held at Malleshwaram for the general public. Participants enjoyed a day in the sun and unravelled forgotten heritage.

JANUARY 2018 ISSUE 4



P A P E R S

EDUCATION AND OUTREACH

2017 was an eventful year for the MI team in spreading awareness and education not only in India but also internationally. We are happy to have widened our earth and heritage network and are excited to share the activities that kept us busy all year round.

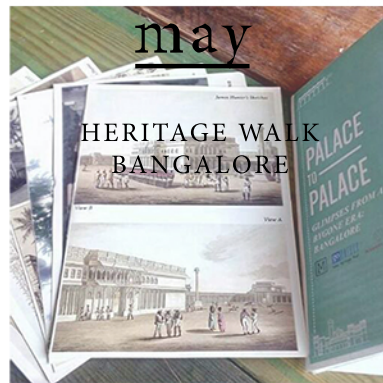
apr

JARDIN-IMAGINNAIRE
GRENoble, FRANCE



may

HERITAGE WALK
BANGALORE



may

BARN RESTORATION
SAINTCHEF, FRANCE

Principal architect Rosie Paul and mud experts from around the world worked towards the restoration of a rammed earth barn.

jul

HANDS ON HERITAGE 4
BANGALORE

A documentation and condition assessment workshop of CV Raman's house in Malleshwaram with architecture students.

aug

EARTH PLASTER
WORKSHOP, BANGALORE



aug

FACADE RESTORATION
GRANIEU, FRANCE



may

INTERNATIONAL EARTH
FESTIVAL, FRANCE

Festival de Grains d'isère - open to public with earth experts from over the world showcasing the versatility of the material.

may

MASON'S TRAINING
WORKSHOP, FRANCE

A one day training programme at Bourgoin-Jallieu in earth plastering and rammed earth

jun

PLASTERING WORKSHOP
PICARDIE, FRANCE



oct

COB WORKSHOP
BANGALORE

An upcycling and mud workshop where discarded beer bottles were made into walls by enrobing them in mud.

sep

EARTHEN OVEN
KOCHI, KERALA



nov

ADOBE WORKSHOP
BANGALORE



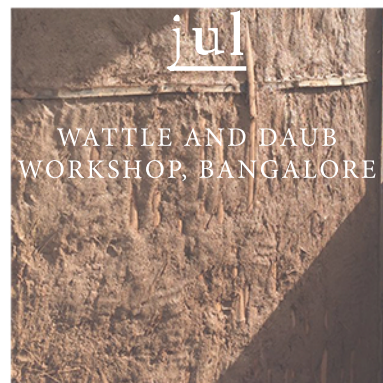
jun

EARTH FLOORING
PALLADRU, FRANCE



jul

WATTLE AND DAUB
WORKSHOP, BANGALORE



jul

KIDS' WORKSHOP
LYON, FRANCE



nov

EARTH PLASTER
MONTPELLIER, FRANCE

The Workshop was held for algerian professionals with french earth plastering expert Sylvie Wheeler and Rosie Paul from Masons Ink.

nov

MAKER FAIRE
BANGALORE



nov

MAKER FAIRE
BANGALORE

Maker Faire is part science fair, part county fair, and part something entirely new. It was a showcase of invention, creativity, and resourcefulness.